

Since 2004, the CASA House Sexual Assault Prevention Program for Secondary Schools (SAPSS) has utilised a **whole-school approach** to prevention of sexual assault.

The Program requires **Principal-driven** commitment to sustaining the program and to engaging a cross-section of the school community.

Sexual Assault  
is **any sexual behaviour**  
that makes the victim/survivor  
feel uncomfortable,  
**frightened or threatened.**  
It is sexual activity that  
the victim/survivor has not  
given **consent** to.

**"Sexual assault  
is real for our community  
– we should all be aware  
of sexual assault  
and how to deal with  
it appropriately."**  
(Secondary School Teacher)

**"Everyone should  
do this program.  
You need to know  
this information"**  
(Year 10 student)

### CASA House

Level 3, 210 Lonsdale Street,  
Melbourne VIC 3000

Administration

**(03) 9635 3600**

Counselling and support **(03) 9635 3610**

24 hrs (free call) **1800 806 292**

Email [casa@thewomens.org.au](mailto:casa@thewomens.org.au)

Web [www.casahouse.com.au](http://www.casahouse.com.au)

CASA House is a department of the Royal Women's Hospital. It is a government funded organisation that provides services on a 24 hour basis. CASA House is committed to ensuring that the silence which surrounds sexual assault continues to be broken and that victim/survivors are provided with the necessary support.

CASA House's services include:

- Crisis care for recent assault
- Counselling: support and advocacy
- Support groups
- Support for families and friends
- Professional consultation
- Education and training
- Research and public advocacy
- School-based prevention programs

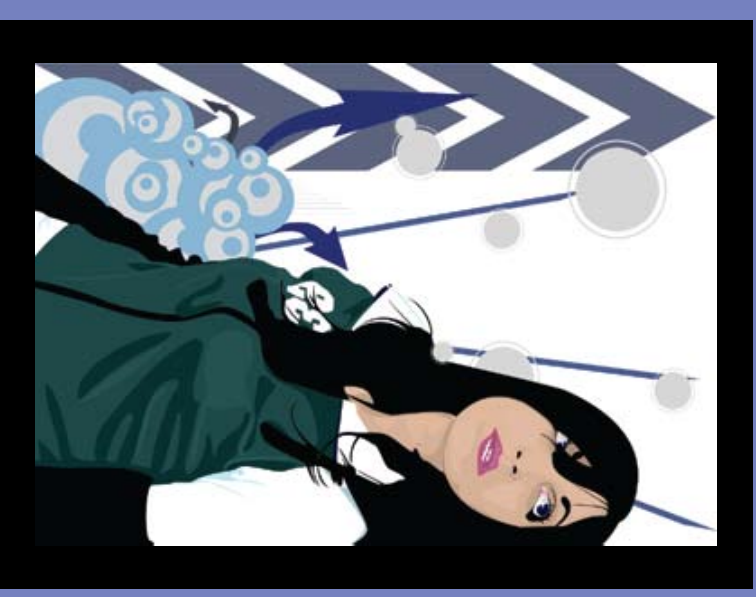
These services are available in the areas of Moreland, Hume, Melbourne, Yarra and Moonee Valley and to patients of the Royal Women's Hospital.

Please contact us for information about sexual assault services and programs in your local area.

SAPSS model developed by:  
CASA House, the Royal Women's Hospital, Melbourne

# SAPSS

## Sexual Assault Prevention Program for Secondary Schools



**CASA house**  
Centre Against Sexual Assault



**the women's**  
hospital  
the royal women's hospital

**Objectives of the model**

**Prevent:**  
Reduce the incidence of sexual assault in school communities

**Respond:**  
Enhance the capacity of secondary schools to respond to sexual assault

**LONG TERM PRINCIPAL-DRIVEN COMMITMENT TO WHOLE SCHOOL APPROACH**

**WHOLE SCHOOL APPROACH SAPPSS**

**ONGOING EVALUATION**

**Ongoing partnership**

- Long term
- Phased implementation
- Partnership between school and agency
- Engaging community partners

**Staff professional development**

- All school staff
- Introduction to Sexual Assault and how to respond to disclosures

**Train the trainer workshops**

- Core group of facilitators of the student curriculum; teaching and support staff
- 3 days of professional development
- Curriculum and leadership training

**Student curriculum**

- Middle school years
- 6 week program, 1 period a week
- Singer gender and mixed groups
- Social action component

**School policies and procedures**

- Safety and wellbeing
- Sexual assault and harassment
- Bullying
- Respectful relationships

**Peer educator program**

- Senior students
- Training in leadership, communication and public speaking

**Outcomes of the model**

- Reduce the incidence of sexual assault in school communities
- Establish safe environments for young people to discuss relationships, consent and communication
- Enhance young people's knowledge of and access to support
- Enhance the capacity of secondary schools to respond to sexual assault
- Positive changes in school culture, ethos and environment